

F

234

R6P6

*Souvenir*

---

---

PICTURESQUE  
ROANOKE



FIRST EDITION

*VIRGINIA*

---

---





Class F 234

Book .R 6 P 6

Copyright N<sup>o</sup> \_\_\_\_\_

COPYRIGHT DEPOSIT





# PICTURESQUE ROANOKE

Being *A Series of Reproductions* from photographic views, taken in the City of Roanoke, Virginia, and the vicinity thereof, especially for this work

UNAVOIDABLY, SOME OF THE CHOICEST VIEWS AND MOST ATTRACTIVE RESIDENCES DO NOT APPEAR IN THIS EDITION, BUT OUR PLANS FOR SUBSEQUENT EDITIONS CONTEMPLATE QUITE A NUMBER OF ADDITIONS, CHANGES, AND IMPROVEMENTS, AND WE SHOULD ESTEEM IT A FAVOR IF OUR FRIENDS WILL SEND US ATTRACTIVE VIEWS OF THE EXTERIORS OF THEIR HOMES, OR ANY VIEW OF PICTURESQUE SCENERY THEY MAY POSSESS OR BE ABLE TO SECURE



Copyrighted, nineteen hundred and two

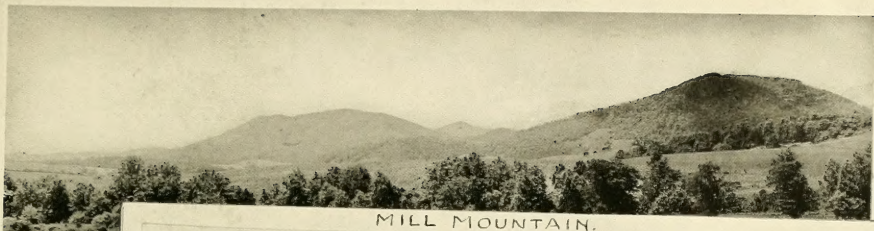
By *The Stone Printing and Manufacturing Company*, Printers and Publishers, Roanoke, Virginia

Published by THE STONE PRINTING AND MANUFACTURING COMPANY, *Roanoke, Virginia*

For sale at the *Bookstores* or by the *Publishers*. Price, fifty cents; by mail, sixty cents  
*A Few*, specially bound in ooze sheep, \$1.25; by mail, \$1.35

THE LIBRARY OF  
CONGRESS,  
One Copy Received  
JAN. 25 1903  
COPYRIGHT 1877  
Jan. 7-1902  
CLASS a XXc. No.  
50215  
COPY 8.

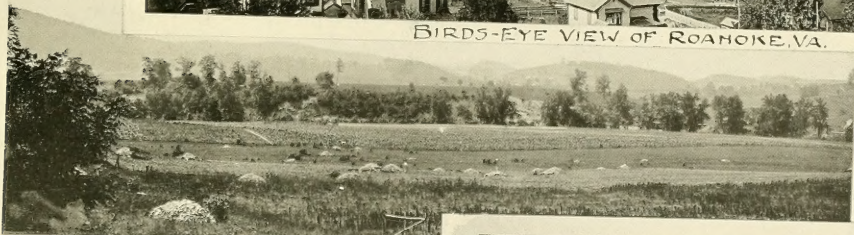
F234  
R6P6



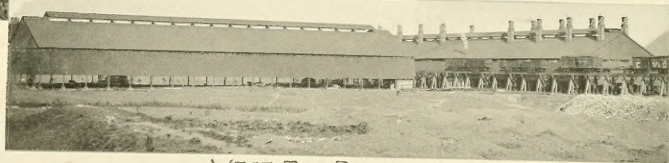
MILL MOUNTAIN.



BIRDS-EYE VIEW OF ROANOKE, VA.



THE GISH FARM



WEST END ROLLING MILL.



BETHANY PRESBYTERIAN CHURCH



FRANK S. HILL



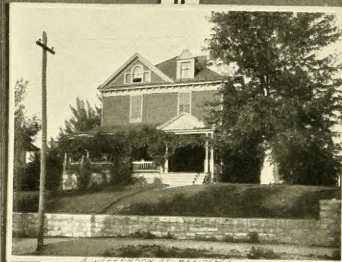
POST OFFICE



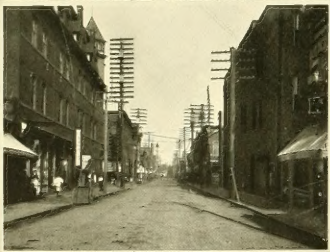
VIEW FROM THE BRIDGE



GENERAL OFFICE N. & W. CO.



FRANK S. HILL



SALEM AVENUE

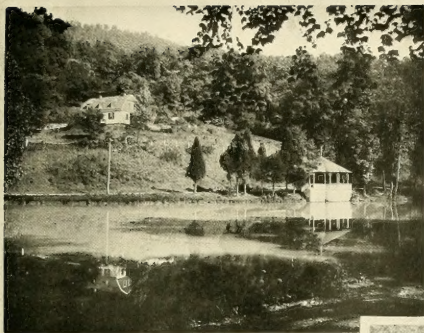


DEPOT ON N. & W. CO.



JEFFERSON ST. VIEW

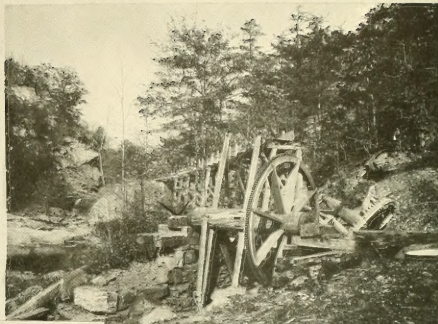




CRYSTAL SPRING



SIBERT DRY GOODS



RUINS OF OLD MILL NEAR ROANOKE - VA.



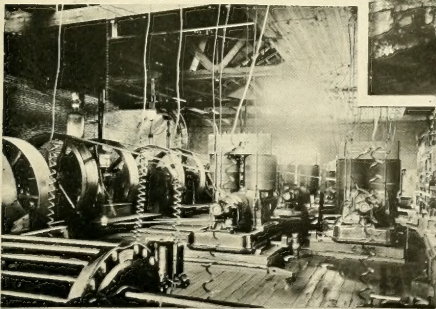
WEST END



ANOTHER VIEW OF CRYSTAL SPRING



WEST END YARDS



© RAE ROANOKE - VA.

POWER HOUSE



IRON BELT BUILDING



PONCE DE LEON HOTEL



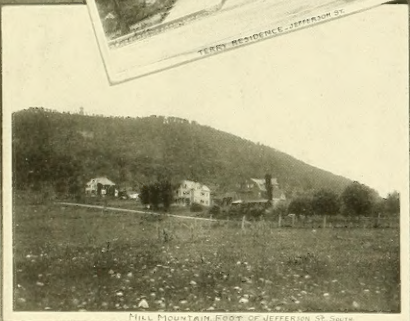
TERRY BUILDING



TERRY RESIDENCE JEFFERSON ST.



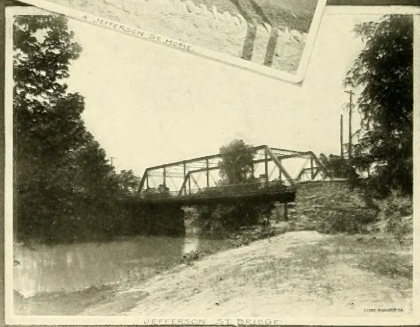
A JEFFERSON ST. HOTEL



HILL MOUNTAIN FOOT OF JEFFERSON ST. ROAD



DR. HOSE CO.



JEFFERSON ST. BRIDGE

ST. LOUIS, MISSOURI



SAMUEL B. CARY.



THE BRICKYARD.



JAMES EVERETT'S - SOUTHERN EXPRESS BLDG.



T. L. KENNETH.



FRANKLIN ROAD.



STONE, KEMPAE, VA. - L. E. JOHNSON.



CRITTENDON HOME.



INTERIOR VIEW OF ROANOKE COTTON MILL.



J. EDNA, ROANOKE, VA



ROANOKE ELEVATOR



CHAS. T. JENNINGS



EXPANDING GROCERY AND MILLING



HARVEY T. HALL



EDW. L. STONE



GEORGE M. BAIN



THE "EVENING WORLD" OFFICE

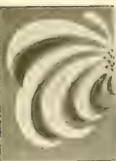


S. D. FERGUSON



THE ROANOKE TIMES' OFFICE

STONE  
ROANOKE, VA.



STONE-ROANNE-Va.

St. Mary's Church

CITY HALL AND JAIL

View of Commission Building, formerly Residence



BELMONT



# PUBLIC SCHOOLS

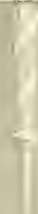
RUNNERS



BRIDGE



CLINTON





**CHURCHES,**  
ROANOKE, VA.



ST. JOHN'S  
ROANOKE, VA.





WEST END FURNACE



W. C. HOUSE



MARKET SQUARE



RAILROAD YARD, WOODS STATION



N.E. W. OFFICE, PARK ST.



W. C. HOUSE



RESIDENCE OF MAJ. W. W. BRYAN



ELKS' CLUB

PINE-BLAUNDE, PA.



PARLORS IN THE RESIDENCE OF MAJ. W. BRYAN.





5142





PHOTOGRAPHIC BIRD'S-EYE

• STONE • ROANOKE • VA •



VIEW · ROANOKE · VIRGINIA ·

The above Photographic Reproduction does not begin to do justice to the real picture, nor does it show the detail, nor give a proper idea of the Business Houses or Residences. At the center of the picture it covers a distance of about five or six miles.



10th PRESBYTERIAN



EVANGELICAL



MARRET HOUSE



10th PRESBYTERIAN



VIRGINIA COLLEGE





LOOK IN BALLYMOR

OLD PAPER MILL



STONE ROADNO. 14

R. R. FAIRFAX

DR. H. W. HARRISON

COL. THOMAS LEWIS







WEST END FURNACE



VIEW FROM THE BANK OF THE BRIDGE



J. W. MARTELLAS



NATURAL BRIDGE



FRANKLIN ROAD BRIDGE





BIRD'S EYE VIEW LOOKING WEST  
FROM THE CORNER OF  
CAMMELL AND TAPPAN



BIRD'S EYE VIEW OF KONAHALE  
FROM MONTGOMERY'S RESIDENCE.



THE HOME OF THE BIRD



ROAD TO THE LEAK HOLE



STONE  
KONAHALE  
VA.



View of town from hills



HOTEL STRATTON



HILL ST. HOTEL



RESERVOIR



KENMORE HOSPITAL



CENTRAL MANUFACTURING CO.





*RESIDENCES,  
ROANOKE, VA.*

R. A. BUCKNER

W. H. LEWIS





Scenes about Hollins Institute, near Roanoke.



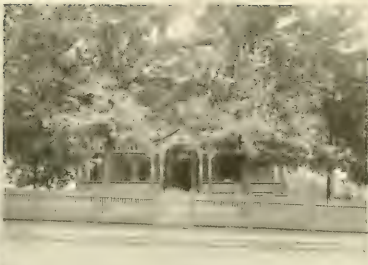
CAPT. BRANSON



A. J. ...



COL. THOMAS LEWIS



DR G. M. P. COLE



MRS. MINNIE TAYLOR



A. L. BERT



D. MEADOWS



DR. J. C. KIRK  
CORNER OF LIBRARY - PART OF DINING



THOMAS LOWE



F. B. THOMAS



MRS. JANE THOMAS



Scenes about Virginia College.



THE ST. CLAIR HOUSE



THE ST. CLAIR HOUSE



THE ST. CLAIR HOUSE



THE ST. CLAIR HOUSE



THE ST. CLAIR HOUSE



THE ST. CLAIR HOUSE



THE ST. CLAIR HOUSE

STONE HOUSE  
1874



PHOTO BY J. H. BLAKEMORE

• ROANOKE, 1882 •

1882



PHOTO BY W. C. LANDIS

ROANOKE FROM SAME POINT, 1902.

1902













LIBRARY OF CONGRESS



0 014 415 221 9

